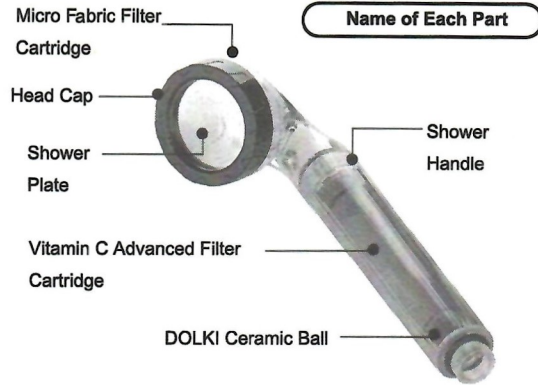


USER'S GUIDE

OSMIO

Vitafresh Shower Head

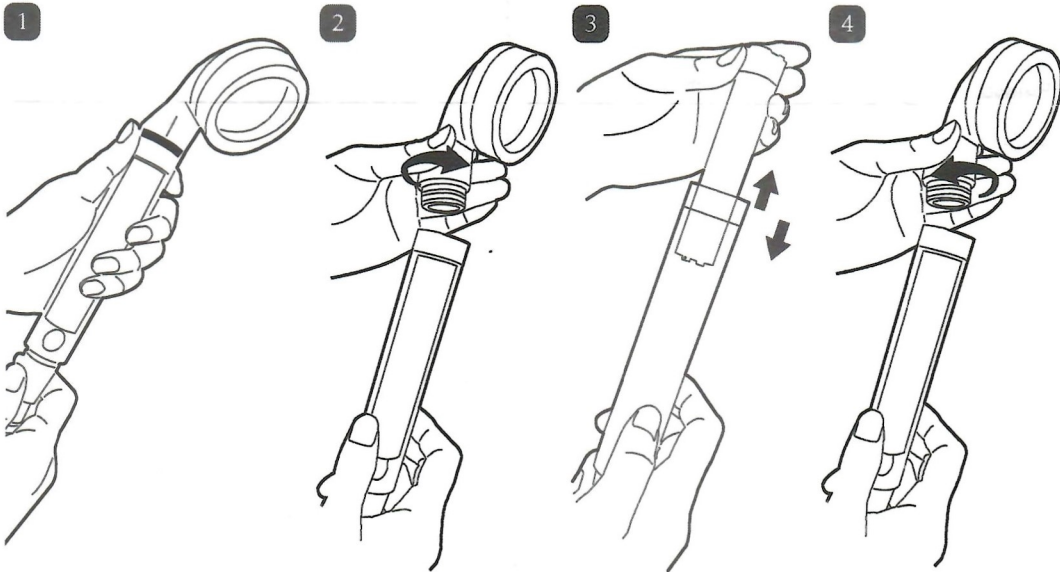
! You are kindly required to read carefully this user's guide before installation and use.



HOW TO INSTALL & REPLACE VITAMIN C ADVANCED FILTER CARTRIDGE

HOW TO INSTALL OSMIO VITAFRESH SHOWER HEAD

1. Please disassemble your existing shower head from shower hose, then, connect shower hose with OSMIO Vitafresh Shower Head.

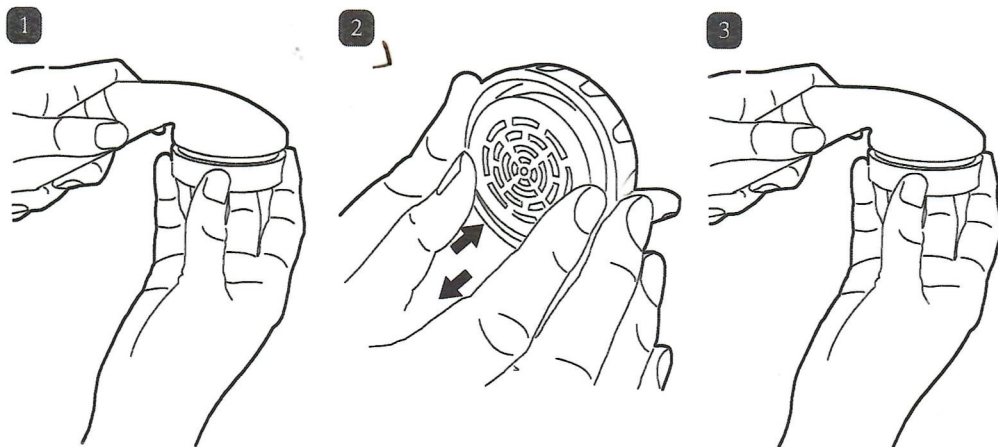


HOW TO REPLACE VITAMIN C ADVANCED FILTER CARTRIDGE

2. Please disassemble the head from the shower handle.
3. Please take existing cartridge out and insert new one into the shower handle.
4. Then, please assemble the head with the shower handle. Now, you are ready to use!

[NOTE]

Please ensure the DOLKI Ceramic Ball is in place when changing filter cartridges.



1. Unscrew the head cap from the shower head.
2. Remove the existing cartridge and insert a new cartridge.
3. Reassemble the head cap to the head.

SPECIFICATION

Product	: OSMIO Vitafresh Shower Head
Model No.	: SH-VITAFRESH
Service Life of Each Cartridge	: Vitamin C Advanced Filter Cartridge 1~3 months (The life span of 1 cartridge is 30~45 days for the 4 family members in average) : Micro Fabric Filter Cartridge 3~4 months (Depending on water quality & temperature & usage)
Net Weight	: 205 g
Dimensions	: 65(W) x 65(D) x 245(H) mm
Temperature	: 12~60 ° C
Water Pressure	: 2~8 kgf/cm ²
Flow Rate	: 6.0 L / min

[USER TIP] It is advised to clean the spray plate of the shower head regularly to prevent water from spraying at an angle. If you have very hard water this can cause sideways sprays. It is recommended to clean the spray plate with a soft cloth or old toothbrush and if severely blocked, remove and descale using lemon juice, vinegar or other descalant to clean thoroughly and then reassemble.